



THE TROY 3000

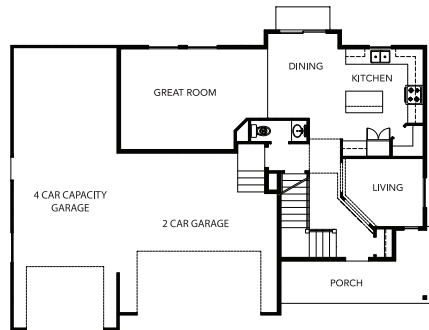
— TWO-STORY —

Total Square Feet: 2,985

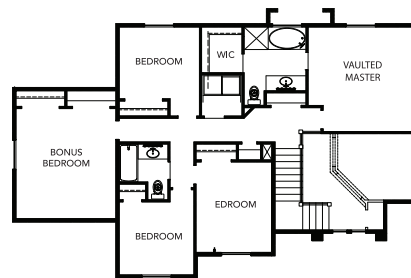
Finished Square Feet: 2,050

Unfinished Square Feet: 935

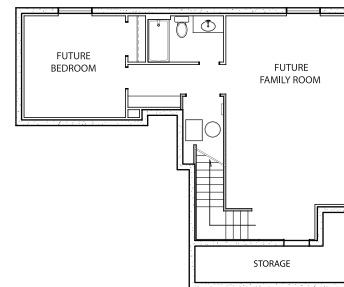
MAIN FLOOR



2ND FLOOR



BASEMENT



— FEATURING —

- 4-5 Bedrooms
- 2 ½ Baths
- Spacious Kitchen
- Walk-In Closet
- Custom Railings
- Vaulted Ceilings
- 4-Car-Capacity Garage
- Large Bonus Room
- Grand Bath w/Garden Tub
- Upstairs Laundry
- Wrap-Around Porch
- Large Cold Storage Room



CASTLE CREEK
HOMES

EXPERIENCE OUR DIFFERENCE™

CASTLECREEKHOMES.COM

© Castle Creek Homes. The use of these plans, drawings and renderings is expressly limited to Castle Creek Homes. House design, floor plan and exterior finish may not depict standard plan. All sizes shown are estimates only. Changes may occur without notice. 12/11/2020