

# THE HOLLISTER 3600

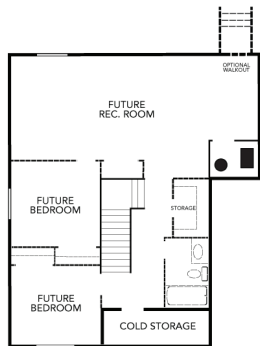
— TWO STORY —

Total Square Feet: 3,552  
Finished Square Feet: 2,140  
Unfinished Square Feet: 1,188  
Optional Bonus Room: 224

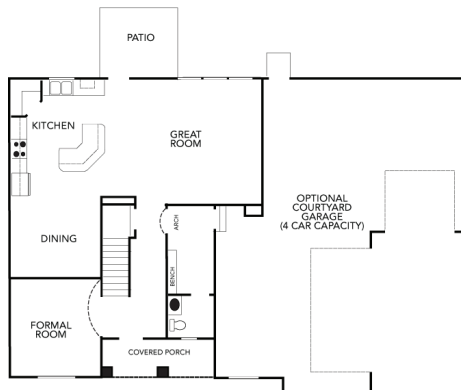
— FEATURING —

- 4 Bedrooms
- 2 1/2 Baths
- Spacious Kitchen
- Covered Porch
- French Doors
- Walk-In Closet
- Cold Storage Room
- 3 Car Capacity Garage
- Grand Bath w/Garden Tub
- Master Bed Retreat Room
- Custom Railings throughout
- Mud Bench Area
- Tray Ceiling in Master
- Optional 4 or 5 Garage

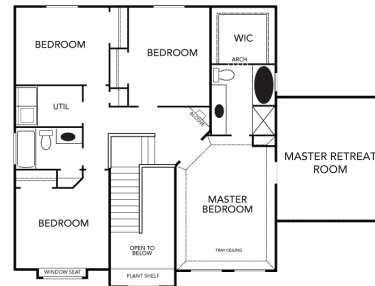
BASEMENT



MAIN FLOOR



2ND FLOOR



CASTLE CREEK  
HOMES

EXPERIENCE OUR DIFFERENCE™

OFFICE: 801-937-4836

**CASTLECREEKHOMES.COM**

© Castle Creek Homes. The use of these plans, drawings and renderings is expressly limited to Castle Creek Homes. House design, floor plan and exterior finish may not depict standard plan. All sizes shown are estimates only. Changes may occur without notice. 03032020